

FREE TO ALL
PUB USERS

beerlines

the magazine of the North Hampshire branch of the Campaign for Real Ale

ISSUE 14 JULY-SEPTEMBER 2016

Andy, Faye and Iain from Red
Cat Brewery. See page 6.
Photo © Jim Turner



CAMPAIGN
FOR
REAL ALE

WWW.CAMRAHANTSNORTH.ORG.UK

In This Issue...

- Brewery Focus - Red Cat
- Pubs & Clubs of the Year
- Pub Focus - White Hart, Over Wallop
- Pub Walk - Sutton Scotney & Micheldever
- ... & LOADS MORE

FREE PINT OF BEER
& STEIN GLASS
WITH EVERY TICKET

WEST BERKSHIRE BREWERY



Oktoberfest

BIERFEST

24th September 2016

Craft Beer, Bavarian Beer and Real Ale

Live Music & Oompah Band, Great food including German Bakery

Saturday 24th September 2016 • Midday until 11.30pm

Tickets 🍷 £15

Early Bird (Before 30th June)
& CAMRA Discount, only £12.50

For more info and to book

01635 202968

WBBREW.COM



WESTBERKSBREW

Tithe Barn, Yattendon, Berkshire, RG18 0UE

Branch Contacts

Editor:

Jim Turner

e: beerlines@camrahantsnorth.org.uk

Branch Chairman

Michael Hodson

e: chairman@camrahantsnorth.org.uk

Branch Secretary: Currently vacant

All officers can be contacted securely through our website (see below):

Pubs and Clubs Officer - John Buckley

Membership Secretary - Brenda Cross

Branch Contact - Currently Vacant

LocAle Officer - Pat Hayward

Social Secretary - Currently vacant

Branch Treasurer - Doug Cross

Webmaster - Currently vacant

Web: www.camrahantsnorth.org.uk

Twitter: @CamRAHantsNorth

Facebook: 'North Hampshire CAMRA'

The Editor reserves the right to amend or shorten contributions for publication. All editorial copyright © North Hampshire CAMRA 2016

Disclaimer: Views expressed in this publication are those of their individual authors and are not necessarily endorsed by the Editor, branch committee or the Campaign for Real Ale nationally. North Hampshire CAMRA accepts no liability in relation to the accuracy of advertisements; readers must rely on their own enquiries. It should also be noted that acceptance of an advertisement in this publication should not be deemed an endorsement of quality by North Hampshire CAMRA.

Trading Standards (Hampshire)

Montgomery House, Monarch Way, Winchester
SO22 5PW

t: 01962 833620 e: tsadvice@hants.gov.uk
www.hants.gov.uk

Campaign for Real Ale Ltd.

230 Hatfield Road, St. Albans, Herts, AL1 4LW

t: 01727 867 201 e: camra@camra.org.uk
www.camra.org.uk

PUBLISHED BY  capital

Capital Media Group

First Floor, Central Buildings, Middlegate,
Newark-on-Trent, Nottinghamshire, NG24 1AG

t: 01636 302 302 e: hello@choose.capital
www.choose.capital

© 2016 Capital Media Group. All Rights Reserved.
No part of this publication may be transmitted,
reproduced, recorded, photocopied or otherwise
without the express written permission of the
copyright holder.

Editor's Shout

A warm welcome to you

I am writing this at the beginning of June and the CAMRA Revitalisation project (see Editorial Issue 13) is well underway. How it will pan out no one yet knows, but one thing is clear: if the Campaign is to survive – if indeed it is felt there is a need for it to survive – then we must seek to address more aggressively the current situation with regard to pub preservation, breweries, beer and cider as well as the government-sponsored prohibition lobby. For my part, the battle to save cask conditioned beer (Real Ale) has largely been won and to continue to focus on this to the exclusion, partly or wholly, of other new exciting styles of beers and dispense methods may well be detrimental to CAMRA's survival. It also does no favours to the pub-going populace as a whole who contribute in no small way to the survival of our pubs.

In our 45 years of existence we have achieved great things but we must continue to be relevant in the 21st century. The task in the next year or so, of consolidating and debating the many differing views of our 179,000 members, will not be an easy one, but it is an opportunity to enlarge further our organisation's base and hence our effectiveness in campaigning to ensure a fairer deal for pub users as well as pub licensees and small brewers.

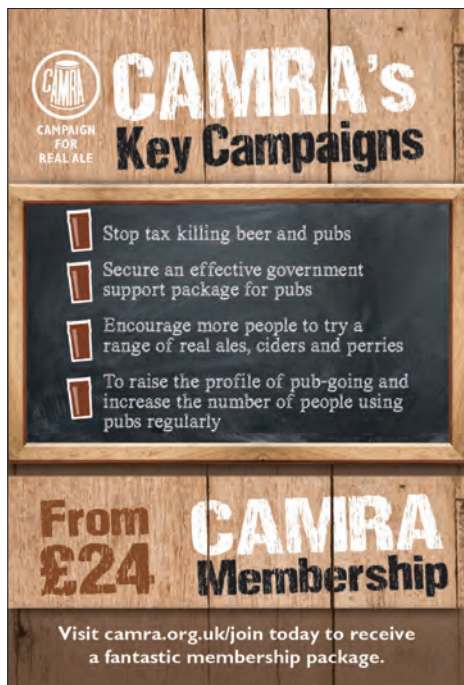
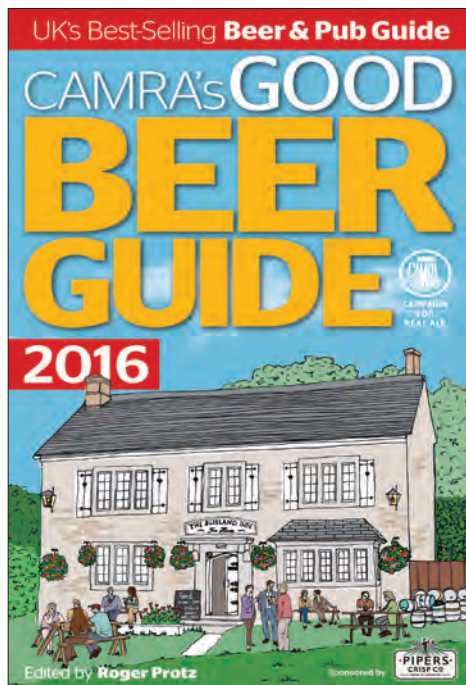
On the social side, beer festivals are popping up everywhere - there is never a week without a festival somewhere near you. Encouragingly, more and more of these are run by organisations other than CAMRA, especially pubs. See 'What's Happening' on page 12 for information on just some of the events taking place over the next few months.

Finally, preparations are underway for the Basingstoke OctoberFest and the branch is asking for CAMRA volunteers to work behind the scenes during this very prestigious event. See page 5 for more information. It's fun to be involved.

Cheers! Jim Turner

(Magazine Editor, North Hampshire CAMRA)

Online Beer Lines:
www.camrahantsnorth.org.uk



“ Quality and service
was **excellent**....
Would recommend
to **any** business ”

We're the UK's **No.1 printer** of brochures and
booklets for events, businesses and festivals.



**PROGRAMME
PRINTING.CO.UK**

Order online 24/7. Free Delivery.

Calling all North Hampshire CAMRA Branch members



Volunteer and get involved in the running of a Beer Festival

Plans for this year's annual OctoberFest in Basingstoke are well underway and the branch is looking for help with the event.

Our role will be to set things up, train and advise the paid staff, manage the beer quality, liaise with Event staff during the event, and take down at the end. As with last year we will not be serving or dealing with cash.

We need small teams of CAMRA volunteers as follows:

WEDNESDAY 5th OCTOBER

1400 – 1800 to set up & receive beer deliveries

THURSDAY 6th OCTOBER

1100 – 1500 to tap & spile casks

FRIDAY 7th OCTOBER

1700 – 2359 to check beer, cask maintenance

SATURDAY 8th OCTOBER

1000 – 1400 to remove spiles, check beer & cask maintenance

1400 – 1800 to check beer, cask maintenance

1800 – 2330 to check beer, cask maintenance

SUNDAY 9th OCTOBER

1000 – 1400 to remove spiles, check beer & cask maintenance

1400 – 1930 to remove spiles, check beer & cask maintenance

MONDAY 10th OCTOBER

0900 – 1300 to take down

Please contact jeffsalt@sky.com

Distributors... We need you!

Distributors wanted to deliver *Beer Lines* to the following pubs, all in the RG20 area.

- Furze Bush Inn, Ball Hill near Newbury. RG20 0NQ
- Swan Inn, Newtown. RG20 9BH
- Caernavon Arms, Whitway. RG20 LE
- Rampant Cat, Woolton Hill. RG20 9TP

Please contact jeffsalt@sky.com

CAMRA Discounts

The following outlets provide discounts to card-carrying CAMRA members:

Odiham & Greywell Cricket Club, Odiham:
Club members' rates

The White Hart, Hook:
20p off a pint; 10p off a half pint

The White Hart, Whitchurch:
50p off a pint; 25p off a half pint

Basingstoke Sports & Social Club:
Club members' rates

Publicans: if you wish to offer discounts to CAMRA members and be listed here please contact the editor on beerlines@camrahantsnorth.org.uk

Red Cat Brewing

They really 'Don't do Boring'...

When Iain McIntosh and Andy Mansell decided to set up a brewery business in 2012 there were a lot of decisions to make - what to call it, where it would be sited, what to brew and the size of plant amongst other things. They both have a passion for beer - Iain retired as a Bio-Chemist but then spent five happy years learning all about brewing at Flowerpots Brewery in Cheriton. Andy is the son of Clive Mansell, well-known in Winchester for leasing a number of Greene King pubs, including the Fulflood and Queen Inn. Andy was brought up in and around pubs all his life and he set up small microbreweries in both these pubs before branching out to start Red Cat with Iain.

The name Red Cat came through Iain being a cat-lover and the colour red - they don't do boring, do they? The graphic Red Cat is called 'Mr M', after Iain, as in the name of one of their popular core beers *Mr M's Porter*. Two main strands run through the marketing - the strong design-led presentation of the

beers (they used local artists for original designs from the start, with Lindsay Lombard and more recently Kirsten Houser) and the 'We don't do boring' ethos, to create what they describe as 'imaginative, stunning craft beer' as their unique selling point.

A Winchester industrial unit just off the M3 is where they settled, being accessible and practical. The plant was commissioned and built by Malrex Fabrications of Burton-on-Trent and all functions are instrumented and controlled remotely via a laptop. The first brew was produced on 18th March 2013. However, due to a number of issues it wasn't until 6 p.m. on 11th April 2014 that Red Cat's first commercial brew, *Red Cat Bitter* (3.7%) was launched at four pubs simultaneously, (three in Winchester, one in Southampton). After that came *Tomcat*, a 4.7% golden ale, then two more beers to make up a core of four.

Today, with some tweaking, there are still four core beers: *Prowler Pale* 3.6%, *Scratch* 4%, *Mr M's Porter* 4.5%, and *Tomcat* 4.7%. The beer range of 14 is supplemented by occasional experimental brews named after the Gyle number rather than a cat-themed name. There is a range of brews produced under the 'Untamed' name including *Feral Vienna IPA* 6.2%, *Kairos* 4.4%, *Smoggy* 4.7%, *Contemplation* 4.7%, *Imperial* 15 (9.1%) the strongest beer brewed, plus a new brew, *Strata* at 4.8% described as a citrus sour beer. The bottling plant is an old-fashioned rotary one, but output is about 2,000 bottles so will be staying for a while.

Mr M's Porter is produced all year round, and it won their first award, Runner Up at the Basingstoke OctoberFest 2014. More accolades

The bottled beer range in the brewery shop. Photo © Jim Turner



The brewery team being presented with the Beer of the Festival Award (Winchester Beer Festival) for Feral Vienna IPA at the recent Open Day. Photo © Alex MacArthur

have followed, notably as local beer festival favourite beers. The most recent was Runner Up at the Winchester Beer Festival 2016 for *Feral Vienna IPA*.

Currently Red Cat brews about twice a week and produces around 20 barrels. The main production limitation is the number of fermenters. Iain and Andy hope to obtain more in the future. The challenge is to balance beer demand against the risk of overproduction, particularly in Hampshire where there is quite a lot of competition. Recently they have opted to use 30 litre Polykegs which look like capsules, are robust and have Sankey connectors.

The brewery has opened a small tasting 'tap room' to showcase the beers. It serves as a comfortable place to learn about the Red Cat range, buy T-shirts, wonder at the original cat artwork on the walls and enjoy a fresh tasty pint before going on a brewery tour (two options) or buying bottles and draught beer off-sales in two- or four-pint takeaway containers (or bigger!).

Now, after two years, two successful open days, an increase in staff to include Faye Pain, (previously at Upham) in a marketing role and Jimmy Hatherley as a second brewer, Red Cat is now an established and respected brewing operation,



A recent Open Day at Red Cat. Photo © Alex MacArthur



with an emphasis on producing quality beers consistently. As Andy says, come along, do a tasting tour, sample everything, because even if you don't usually drink beer you are bound to find something you like. With 14 different beers, there is no fear of being disappointed - or bored at Red Cat Brewing!

Check the website out for full details of location, opening times, events, tours and sales www.redcatbrewing.co.uk; Facebook: Red Cat Brewing; direct queries phone 01962 863423.

Brenda Cross

THE QUEENS ARMS

GREAT ALE IN A WELCOMING ATMOSPHERE

WHAT MORE COULD YOU WANT?

HOMEMADE FOOD
SERVED DAILY

BEER GARDEN

FIND US IN THE
GOOD BEER GUIDE 2016

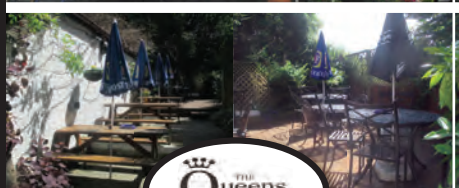
BUNNIAN PLACE, BASINGSTOKE, RG21 7JE

CALL: (01256) 465488

E: THEQUEENSARMS2303@GOOGLEMAIL.COM

TWITTER: @QUEENS_ARMS2303

WWW.THEQUEENSARMSPUB.CO.UK



Online Beer Lines:
www.camrahantsnorth.org.uk

Bar Chat

News & gossip around the North Hampshire branch area

If you have any information about your pubs (closures, openings, changes of owner and so on), please contact the editor at beerlines@camrahantsnorth.org.uk.

Michael and Rosie, formerly of the **Black Swan** at Monxton, have taken over the **Plough** at Grateley. Beers available at the time of writing were: Wells Eagle IPA, Purity Mad Goose PA, Flack Manor Double Drop and Butcombe Bitter. The pub appears to be open all day.

Also in Grateley, the **Shire Horse**, which has been closed for some time, appears to have been sold. All fixtures and fittings have been removed.

Beer Lines understands that the **Bell & Crown**, Hatherden will be changing licensee in July.

In Andover, the licensees from the **Swallow** have taken over the **Lardicake**, the **Queen Charlotte**, recently closed, has now reopened and J D Weatherspoon's have submitted plans to turn the 1st & 2nd floors of the **John Russell Fox**, into hotel accommodation.

Some 'high-profile' pubs seen as up-for-sale at the time of writing include: the **George**, Vernham Dean; the **Red Lion**, Overton; the **White Hart**, Charter Alley; the Plough, Longparish.

The **Mole**, Monk Sherborne should have reopened by the time Beer Lines is published. However, we have reported this a few times before so don't hold your breath...

The **Pineapple**, Brimpton Common, changed licensees on 18th April. There are also rumours that the **Cricketers**, Baughurst is getting a new landlord.

Upham Brewery has announced plans for a £35 million flotation on the stock market. Upham Brewery's new pub, the **Hawk** at Amport, has four pumps featuring two regular Upham beers, one seasonal Upham plus a guest which at the time of writing was Otter Best Bitter. Andy behind the bar has run many pubs and was also head brewer for six years at Ramsbury Brewery. A good food menu is available as well as a pleasant garden at the front with views over the countryside.

Out of area but not by much, at the time of writing, Berkshire-based **Binghams Brewery** was up for sale at a lease cost of £380,000.

Also out of area, **Goddard's Brewery**, Isle of Wight was for sale at the time of writing.

Still out of area, the new owners of the **Cross Keys**, Chute were delighted to come first in the Business section of the Tidworth Area Awards for 'Support for the Community of Upper Chute with the Rescue and Development of the Cross Keys'.

Dorset Orchard First Press Cider is available at the Pub of the Year (POTY), the **Plough**, Little London.

For those who didn't make it to the recent Bank Holiday Beer Festival at the **Swan**, Sherborne St John, you missed a remarkable feast of truly local

Quick Quiz For answers see page 14

Each clue has a double meaning with the same one-word answer. Rearrange the first letter of each answer to find a **brewing unit hard to find in Finchampstead** (7 letters).

1. Bury between
2. Lever your footwear
3. Still and level
4. First lady of the night before
5. Deputy's bad habit
6. Fair speed of tongue action
7. Push on impulse

Brenda Cross

ales. Every brewery featured in the *Beer Lines* Brewery News was represented, plus a few others. Hopefully it will be repeated it next year.

The **Old House at Home**, Newnham, owned by Pub Company Red Oak Taverns, is under threat of being turned into 'executive housing'. At the time of writing, a petition to save it had nearly reached the target of 1000 signatures. Red Oak also owns the **Kings Arms** in Whitchurch and the **Greyhound** in Overton.

The **John o'Gaunt**, Horsebridge reopened on 27th May after being damaged by a fire.

The **New Inn**, Basingstoke has reopened with new licensees. There are two core beers – Adnam's *Ghost Ship* and *Doom Bar* and a changing guest. These have included Greene King *Back of the Net* and Otter *Bitter*. Pie lovers may be interested to know that food is from a company called Pieminister, whose products looked particularly appealing on a visit recently.

The **Wheatsheaf**, Basingstoke has reopened. Real Ales seen recently have been *Doom Bar* and *Courage Best*.

The **Crown Inn**, Upton was reported to be closed at the time of writing.



Award Winning Pub Nestled at The Foot of the North Wessex Downs...

- Excellent locally sourced menu
- Local Real Ales- Good selection of wines
- Private dining room for parties & meetings
- En suite Bed & Breakfast rooms
- Conservatory, terrace & large gardens

www.watershipdowninn.com
 Priory Lane | Freefolk | Whitchurch | RG28 7NJ



Fine Real Ale

HANDCRAFTED IN THE HEART OF HAMPSHIRE
FOR SERIOUSLY GOOD TASTE

1st Drop	Fields of Gold	Autumn Leaves	Winter's Tale
LIGHT & FRUITY ALE WITH A ZESTY FINISH	A GOLDEN WONDER FRESH MIX OF HOPS FOR A DELICIOUS ALE	RICH RUBY ALE SMOOTH AND MALTY WITH A FULL BODY	RICH WINTER WARMER POTENT MIX OF THE BEST BRITISH HOPS
HAMPSHIRE CRAFT ALE	HAMPSHIRE CRAFT ALE	HAMPSHIRE CRAFT ALE	HAMPSHIRE CRAFT ALE
Real Ale 4.2% Abv	Real Ale 3.8% Abv	Real Ale 4.8% Abv	Real Ale 4.5% Abv

facebook.com/uphambrewery T 01489 861 383 WWW.UPHAMBREWERY.CO.UK @uphambrewery

www.camrahampshirerbranch.org.uk

News from the West End

... of the Branch

Members in the western part of the branch area often have difficulty with transport links and have been arranging a number of their own Real Ale related events. The area covered includes Andover, Stockbridge, Whitchurch and Sutton Scotney and surrounding villages. Of course these are open to all CAMRA members wherever they live.

Recently there have been trips to several beer festivals such as Winchester and Salisbury, and walkabouts in Newbury and Frome, as well as a very interesting visit to the launch of Betteridge's Private Browning's Best Bitter at the Wherwell Home Guard Club. Other activities included a visit to Red Cat Brewery's Open Day and a Social at



Crowds at the Great British Beer Festival 2015. Photo © Claire-Michelle Pearson

the Eagle Beer Festival, Abbots Ann. Coming up is a trip to the pubs of Bath and an overnight stay in London for the Great British Beer Festival. Ad hoc trips are also planned with visits to Newbury and Salisbury in the pipeline. The new train link to Dorchester is also being looked at.

FUTURE DATES ARE:

- Saturday 23rd July - Day out in Bath
- Wed/Thur 10th/11th August - Great British Beer Festival, London

John Buckley

Current Pubs in our area

- Barley Mow, Oakley
- Bourne Valley Inn, St Mary Bourne
- Clatford Arms, Goodworth Clatford
- Derby, North Warnborough
- Eagle Inn, Abbots Ann
- Four Horseshoes, Sherfield-on-Loddon
- The Fox, North Waltham
- Fur and Feathers, Herriard
- Leather Bottle, Mattingley, near Hook
- Maidenhead Inn, Basingstoke
- Mill House, North Warnborough
- Northbrook Arms, East Stratton
- Odiham & Greywell Cricket Club
- Plough, Grateley
- Plough Inn, Little London near Silchester
- Prince Regent, Whitchurch
- Red Lion, Overton
- Rising Sun, Basingstoke
- Sun Inn, Dummer
- Watership Down Inn, Freefolk
- White Hart, Charter Alley
- White Hart, Over Wallop
- Wonston Arms, Wonston, Sutton Scotney
- The Woolpack Inn, Totford
- Y Knot Inn, Water End near Hook

Visit www.camrahantsnorth.org.uk to see the latest list with a map link

PUBLICANS: If you wish to benefit from participation in the North Hampshire CAMRA LocAle scheme you must agree to endeavour to ensure that at least one locally brewed real ale is on sale at all times. The term 'locally brewed' in this context refers to a beer brewed within 25 miles of the location of the pub/dub, or from anywhere in Hampshire. Only real ale can be promoted as CAMRA LocAle. LocAle promotional material is provided to all participating outlets. The branch LocAle contact is Pat Hayward who can be contacted through *Beer Lines* on beerlines@camrahantsnorth.org.uk



CAMPAIGN
FOR
REAL ALE

WHAT?UB



whatpub.com

Featuring over 35,000 real ale pubs



Thousands of pubs at your fingertips!

Did you know *Beer Lines* is online?
www.camrahantsnorth.org.uk

What's Happening?

North Hampshire Branch Diary & other events

Saturday 2nd July

Lowde Beer & Music Festival, Mulberry House, Hazeley Bottom. www.lowdefest.com

Tuesday 5th July

CAMRA Revitalisation meeting, Eastleigh Locomotive Engineers' Club, 18 Southampton Road. 7.30 – 9.30pm.

Friday 8th – Sunday 24th July

Craft Cider Festival at J.D. Wetherspoon pubs across the UK. Ciders listed in the Wetherspoon Summer 2016 magazine as well as online www.jdwetherspoon.com

Saturday 9th – 10th July

Woodcote Festival of Ale and Steam Rally, eight miles north of Reading on A4074 Reading to Oxford road. www.woodcoterally.org.uk

Friday 15th – Sunday 17th July

Weyhill Fair Beer Festival, Weyhill (3 miles west of Andover). www.weyhillfair.com/events

Saturday 16th July

Alton Classic Bus and Country Pub Running Day (R.E. Running Day). Visit remote country pubs on classic buses. More details on www.bristol-re.moonfruit.com

Friday 22nd – Saturday 23rd July

Beer & Bluegrass Festival, St Aldhelm's Hall, Branksome, Poole, Dorset BH12 1AP. www.poolerhythmroots.co.uk

Thursday 4th – Sunday 7th August

24th Egham Beer Festival, Egham United Services Club, 111 Spring Rise, Egham TW20 9PE. Five minutes from Egham station. www.eghambeerfestival.co.uk

Saturday 6th August

10th Annual Fleet Lions Beer Festival, the Harlington, 236 Fleet Road, Fleet GU15 4BY. www.fleetlions.org.uk/beerfest

Tuesday 9th August – Saturday 13th August

CAMRA GREAT BRITISH BEER FESTIVAL, Olympia, London. Branch trip to the Festival: Friday 12th August. Meet at 11.30 am at Basingstoke Rail Station. See also News from the *West End* on page 10. www.gbbf.org.uk

Thursday 11th August – Saturday 14th August

Bankes Arms Beer Festival, Studland, Dorset. info@bankesarmsbeerfestival.com

Saturday 10th September

Newbury Real Ale Festival, Northcroft Fields. www.newburyrealale.co.uk

Saturday 24th September

Sherfield-on-Loddon Beer Festival, Sherfield Village Hall, Reading Road, RG27 0EZ. Travel by no. 14 bus. www.sherfieldbeerfestival.org.uk

Saturday 8th – Sunday 9th October

Basingstoke OctoberFest, Basingstoke Sports & Social Club. www.hampshireoctoberfest.co.uk

Events may well have changed since *Beer Lines* went to press. For up-to-date information please contact social@camrahantsnorth.org.uk or visit our main website www.camrahantsnorth.org.uk. If you would like to have your real ale-related event published here please contact the editor at beerlines@camrahantsnorth.org.uk for magazine deadlines.

6500+ READERS

If you own or manage a pub, bar or restaurant and serve real ales, it's never been easier to get your business in front of more than 6,000 people! Beer Lines distributes to all branch area pubs in North Hampshire and advertising costs as little as £55 for 3 months.

> CALL 01256 832 832 TODAY



Quality and service
was **excellent**....
Would recommend
to **any** business

We're the UK's **No.1 printer** of brochures and
booklets for events, businesses and festivals.

And we love beer.



PROGRAMME
PRINTING.CO.UK

Order online 24/7. Free Delivery.

Pubs & Clubs of the Year 2016

Congratulations to all concerned



A very big 'Thank You' to all who voted in the North Hampshire Pub and Club of the Year Competitions; it is always pleasing to see which are considered the best. We have around 250 eligible pubs in the area and this year there is a first-time winner. The **Wonston Arms** is a true community pub 'saved' from closure and turned into a fantastic hub of village life. Run by local pub enthusiast Matthew Todd the 'Wonston' serves a fine range of local beers as well as hosting numerous events. Tucked away in Hampshire's countryside it is a 15-20 minutes' walk from the nearest bus stop in Sutton Scotney - don't miss it. A photo of the presentation will appear in the October issue of *Beer Lines*.

Runner-up was last year's winner, the **Plough** at Little London, near Silchester, which also takes the North-East Hampshire area award. The Plough was last year's Wessex winner, reaching the last 16 in the coveted National Pub of the Year Award. Beers are on gravity and handpump and there is also a real draught cider; it is a pub where friendly conversation is the order of the day.



Overall Club of the Year winner is the **Basingstoke Sports & Social Club** at May's Bounty - a club open to all, serving a fine range of beers from Fullers and guests. Otherwise known as the 'Cricket Club', for obvious reasons, it is a welcome quiet haven just a stone's throw from the 'Top of the Town'.

Runner up, which also takes the North-West Hampshire Club of the Year title, is the **Whitchurch Sports & Social Club**, a venue well known for its wide range of community activities and other events, ranging from cabarets and quiz evenings to music festivals. Last year the Blockheads played, while this year's Rockus, hosted at the Club, features the Dub Pistols. Beers are usually two from Red Cat, St Austell and Fullers.

John Buckley - Local branch Pubs & Clubs Officer

Branch Membership Secretary Brenda Cross presenting two awards for Club of the Year (COTY) to Dave Rouse, manager of the Basingstoke Sports & Social Club (ably assisted by bar staff member Heather). The two awards were for North-East Hampshire area COTY and the overall North Hampshire COTY. Photo: © Jim Turner

Branch Chairman Michael Hodson presenting the North East Hampshire Area Award to Terry Brown of the Plough. Photo: © Jim Turner

Answers to Quick Quiz [on page 8]

1. Inter; 2. Shoe; 3. Even; 4. Eve; 5. Vice; 6. Lick; 7. Urge. The brewing unit hard to find in Finchampstead is **ELUSIVE**



LONGDOG BREWERY



**FULL FLAVOURED REAL ALES
AVAILABLE STRAIGHT FROM THE
BREWERY**

A1 MONITOR TRADING ESTATE
WEST HAM LANE
BASINGSTOKE
HAMPSHIRE
RG22 6NQ
01256 324286
WWW.LONGDOGBREWERY.CO.UK



THE COACH & HORSES

- ROTHERWICK -

A friendly, authentic village alehouse boasting a lovely south-facing garden in the midst of tranquil farmland.

Consistently well-kept Hall and Woodhouse ales are always available, served fresh and bright.

Classic pub grub is all home cooked, high quality and good value for money.

Come and experience the atmosphere of this proper pub, and see why it has once again become beloved of the village and beyond.

WWW.COACHANDHORSES-ROTHERWICK.CO.UK

The Street, Rotherwick,
Basingstoke, RG27 9BC
t: 01256 768976

*Great ales great food
& a warm welcome assured.
A gem of a pub*



BOWMAN

ALES LTD



Award Winning Ales
Hampshire's ~~best~~ kept secret!

Worst



Wallops Wood · Sheardley Lane · Droxford · Hampshire · SO32 3QY
Tel: 01489 878110 · Email: info@bowman-ales.com
www.bowman-ales.com

>> ALL BEERS ARE AVAILABLE DIRECT FROM THE BREWERY <<



The UK Hop Crisis

Availability & Quality Problems

The 2015 hop harvest in the US, UK and Europe fell far short of expectations and both quality and yields suffered. Beer Lines asked some local brewers about their thoughts on the hop supply problem and its possible impact on their beers.

First, Iain McIntosh from Red Cat Brewery, Winchester:

While there have been some harvest issues by far the biggest problem for us is the sheer demand for hops, particularly the more interesting ones. We all have to contract forwards for hop supply these days and I'm asking our suppliers for a rolling three year contract. However, even a contract doesn't guard against poor harvest or supply issues. Supply from the 2015 northern hemisphere harvest has been in huge demand, and even things like English Fuggles have sold out. It does mean that recipes have to change, but hopefully we'll be able to substitute in such a way that our beers will not change much or even at all. For the future it's impossible to plan any significant production using high demand varieties like Mosaic, Galaxy, and such. Many brewers are looking to see which hops will be the least likely to suffer supply issues and then base core beers on these hops rather than risk dodgy supply. Meanwhile forward looking companies like Charles Faram are doing their best to breed new UK varieties which is a few years' time will reduce our reliance on New World hops. This should also re-vitalise British hop growing. So the main messages coming out of the hop world are:

- Contract forwards, probably at least three years
- Don't be too ambitious with new 'trendy' hops because you're likely to run into problems
- Try to safeguard recipes by using blends (to allow easier substitution)
- Pick core hops which are least likely to suffer supply shortages

Andy Watts of Little London Brewery reports:
It doesn't affect us at all so far as we don't

get our hops from the hop merchants but direct from the farm so we are not treated as second class citizens due to being a small brewery.

This sort of behaviour from hop merchants was becoming apparent even last autumn. We were warned that we could only have replacement hops rather than our first choice. Of course this was unacceptable to us and our ale production planning for the future.

Jim Turner



CAMRA campaigns for real cider and perry

Real cider and perry grows on trees

Real cider and perry is made from 100% fresh apple and pear juice; not artificially gassed up or processed

Visit camra.org.uk/ciderpubs to find real cider and perry pubs

All Photos: © Jim Turner

Pub Focus

The White Hart, Over Wallop

The epithet 'Hidden Gem' is often overused especially with regard to pubs but in the case of the White Hart is well deserved.

Tucked away down a country road, a mile or so from the Wallop crossroads off the Andover to Salisbury Road (A343), and in an exquisitely pretty village, the White Hart is the epitome of the classic English country pub. Dating from the 17th century this thatched rural hostelry has been in the very capable hands of genial mine hosts, Ed and Mo Smith for the last 36 years. The couple moved to the pub in 1982, eventually purchasing the freehold from owners Whitbread. A fire in the roof space caused considerable damage in the 1980s but showing true British grit and determination they ran the pub from a caravan in the car park for 17 weeks while repairs were underway.

The pub is steeped in history, once even being home to a small brewery, and Ed was proud to show me a folder of very old deeds and other documents, some on pigskin, detailing past ownerships going back hundreds of years. The walls are adorned with old photos, including

one showing the pub displaying a "Strong's of Weyhill" sign. This was an arm of the more famous Strong's of Romsey brewery, bought by Whitbread in 1969.



The front garden of the White Hart showing the stocks



Ed and Mo behind their bar

Ed and Mo run a mainly wet-led pub serving excellent ales. When I visited in May with branch LocAle officer, Pat Hayward and his wife Cheryl, the real ales were from Flack Manor, Ringwood and Banks's. Ed always has at least one local ale available and the pub now has LocAle accreditation.

Food is available lunchtimes and evenings - "good pub grub", nothing fancy. This is most definitely not a restaurant but a proper village local, the likes of which are sadly becoming rarer. Like all good locals it boasts darts teams (including a ladies team), crib teams and bar billiards but also has knitting and book reading clubs.

A real fire in winter months adds to the charm and welcoming atmosphere of this two-bar pub. The well-tended front garden even boasts some stocks, a feature that often amuses visitors who stop to take photographs.

Retirement is currently a topic of conversation for our two hosts - Ed is keen to relinquish the reins, Mo is not so sure. The couple's son, Courtney, will be on hand, though, to ensure family continuity when this hard working couple finally decide to call it a day.

If you're ever in the Andover/Stockbridge/Wallop area, a visit to this 'Hidden Gem' is a must.

White Hart, Station Road, Over Wallop,
Stockbridge SO20 8HU Tel: (01264) 781331
Sat. Nav. Reference 51.143593, -1.599123

Jim Turner

Brewery News

Local brewery updates



Andwell Brewing Company

01256 761044

www.andwells.com

Trade has been good at the brewery, with a number of new customers coming on board. The *Gold Muddler* sold well recently on a *Punch Finest Cask* promotion. As always *Spring Magic* was a great success, selling through quicker than had been hoped. The new seasonal *Sovereign* has already sold out once and another brew has had to be added into the schedule to meet demand. A new limited edition bottled beer is now available - *Sovereign 9.0* a 9% doppelbock bottled in 330ml bottles. It will be available in the brewery shop and at a number of local events.

Work on The Brewhouse is progressing well and internal fit-out has now started. Due to the building work on site there will not now be a July Family Funday, however when The Brewhouse is open there will be an Open Day with BBQ and music. More information about this will follow in due course.



Betteridge's Brewery

07771 966058

www.betteridgesbrewery.co.uk

Betteridge's Brewery remains busy predominantly in the Test Valley providing cask ales to regular pubs, now including the Wonston Arms alongside the George and Dragon, Hurstbourne Tarrant and the Three Tuns, Great Bedwyn. Festivals, fetes, weddings and parties dominate the other sales areas and bottles are of course always in the Inn at Home in Newbury. The reworked *Private Sector* is proving extremely popular alongside the old favourites.

The highlight of the year will be a return trip to The Highland Games in Ennepetal, Germany, largely selling *Serious Black* to the Germans,

having proven to be so popular last year as an alternative to their predominant Pilsner. Summer looms and promises to be busy. Outside events are the icing on the cake for Betteridge's.



Little London Brewery

01256 533044

www.littlelondonbrewery.com

Andy from the brewery has announced the availability of a new brew - *Type 2* - brewed specifically for ale lovers who have been strongly advised to adjust their diets due to *Type 2 Diabetes*. For the technically minded, the colour is 8 EBC, bitterness is 57 EBU (it's hoppy!) and the Alcohol By Volume (ABV) is just 2.0%. It is brewed with high-attenuation yeast and is almost sugar free. The hops and barley are all English. At around half the calories of a traditional pint it is full of flavour with the zest of grapefruit and lime. Of course, it can also be enjoyed by non-diabetics who simply want a low gravity tasty beer.



Longdog Brewery

01256 324286

www.longdogbrewery.co.uk

The 2016 *Longdog IPA*, a traditional, English-styled IPA has now been released. Phil and Lisa spent one incredibly productive day filling almost 1300 bottles which will be ready to drink by the time you're reading this. It is available in the brewery shop so why not pop along to pick some up? There are also a few firkins available; so with the beer festival season well under way, you may be lucky enough to find it on draught as well.

Brindle Bitter has been 'put to bed' for a while and has been replaced with the American-hopped *Red Runner* which is proving popular.

There are plans afoot for a number of specials in the forthcoming months, so watch this space.

And finally, with Longdog's 5th birthday looming, they are contemplating the appropriate way to mark the occasion.



Mash Brewery

01962 795023

Twitter @ MashBrewery

www.mashbrewery.com

Graham at Mash Brewery has announced two new beers: *Gilt* (4.1% ABV), a refreshing golden summer beer using a mix of English and US hops, and *Ruby* (4.8% ABV), a strong, malty beer using English and German malts and German hops. *Beer Lines* understands that production of *Gold* has ceased for the present, possibly due to the price or availability of Citra hops.

They continue to do Hampshire Farmers' Markets and other events; the Watercress Festival in Alresford was especially successful. They have future markets in Romsey, Alton, Southampton, Winchester, Ringwood, Odiham and Andover. Check events on the web page for dates of all the markets they are doing, as well as Twitter & Facebook.

The brewery ran a bar at the Fulflood Street Party in Winchester on 11th June and will again be running a bar at 'Trout 'n About in Stockbridge on 7th August. Mash *Pale* and *Copper* are now appearing in the Angel (J.D. Wetherspoon) in Basingstoke.



Sherfield Village Brewery

07906 060429

www.sherfieldvillagebrewery.co.uk

SVB's 3.9% session beer *TBA* will be making an appearance in the Houses of Parliament in July, following a visit to the brewery by local MP Ranil Jayawardena. New brews *Northern Brewer* (4.3%) and *IPA2016* (5%) have been well received, and will be brewed again.

Sherfield Beer Festival is scheduled for 24th September, and planning will be starting very soon, with lots of new breweries to be represented.



Wild Weather Ales

0118 970 1837

www.wildweatherales.com

Wild Weather Ales have recently brewed collaborative beers. One with *Elusive Brewing* - *Lemon Head*, a lemon and orange infused White IPA, and two others with *Bad Seed Brewery* - *Hopfenweisse* and a strawberry and cracked pepper *Saison*. A new release from the 'Favourite Song' series is (The 1975) *Robbers*, a Nelson/Simcoe Black IPA (4.2% ABV).

Also a brewery Open Day will be happening possibly on a Saturday in September. Keep an eye on Facebook/website for more details, but Bands, Beer and BBQ are all confirmed.

6500+ READERS

If you own or manage a pub, bar or restaurant and serve real ales, it's never been easier to get your business in front of more than 6,000 people! Beer Lines distributes to all branch area pubs in North Hampshire and advertising costs as little as £55 for 3 months.

> CALL 01256 832 832 TODAY

Sourced from
natural English
ingredients

Crafted
Hampshire
Ales



Our core range of ales with a diversity of flavours are available year round:

- Red Boy bitter • Doreen's Dark ale • Pryde best bitter
 - Hoppy Hilda pale ale • Ash Park Special bitter
- plus various Seasonal Ales

LITTLELONDONBREWERY.COM

01256 533044

Little London Brewery Ltd

07785 225468

Did you know *Beer Lines* is online?
www.camrahantsnorth.org.uk

Pub Walk

Micheldever Wander

Start/Finish: Micheldever Train Station

Total distance: 8 - 10 miles.

Leave the main exit of Micheldever train station and head straight on down the road passing the Dove Inn on your right, unless you wish to dine first of course as there is no food menu at the destination pub. Follow this road along for the 10 minutes it takes almost to reach the A303. A path will appear on your left - a long straight roller coaster through the rolling fields - eventually this path becomes a quiet road that 30 minutes later brings you to the tiny hamlet of Weston Colley, a large farm, manor house and a row of cottages at the bottom. Turn right here and follow this road until it turns left. Head straight on through the gate ahead and into the grounds of Norsebury House with an idyllic small lake on your left (I spotted a trout leaping out of it!) The driveway swings right, carry on straight between fence and hedgerow; this eventually brings you out on to the road. Turn left then take an immediate right, a peaceful back road that will take you past watercress beds, pretty thatched cottages, a gorgeous riverside and an old country church. Ignore the first path crossing the river on the left, taking the next one further along. This crosses the river and brings you out behind another church; head out its front entrance, turn right and after five minutes on this road we're at our destination **The Wonston Arms**.

Overall winner of North Hampshire Pub of the Year (POTY) this cosily furnished establishment has four handpumps dispensing a rotating cast of local ales such as Red Cat, Bowman's, Flowerpots and other brews - Wells, Exmoor, Coors/Sharps. The beers are all well kept by genial host Matthew Todd, a local hero who stepped in to revive this wet-led village local. There is no food menu except bar snacks but there are regular food nights - Tuesday is Fish & Chips, Friday night is Curry takeout. There are also music events and the pub sells local honey. Sport is shown on a big screen; it's a real community hub and very welcoming to random visitors too! [Summer opening hours: closed Mon; 5-10 Tue-Thu; 5-10.30 Fri; 12-10



The Wonston Arms

Sat/Sun] Tel: 01962 760288.

Upon leaving the pub the easiest option is simply to re-trace your steps to Micheldever and



One of the bars in the Dove Inn.

the delights of the Dove Inn (more about this later). If you wish to add in a loop through another pristine Hampshire village and another decent pub; when in Weston Colley take the road to the right, up underneath the railway bridge out the other side and into Micheldever village proper. The pub is the other side of the village and well-signed after the church. The **Half Moon & Spread Eagle** is a Greene King house though normally with a guest ale. It has a food menu, large garden and regular events. Some splendid cottages can be seen whilst passing through the village. [Summer opening hours: 12-3, 6-11 Mon-Fri; 12-midnight Sat; 12-5 Sun] Tel: 01962 774339.

Then either head back to Weston Colley or follow the road up through North Brook and with the train track on your left arrive back at Micheldever Station.

The **Dove Inn** is well worth a visit: a large sprawling pub of many rooms and areas. The main bar is the focal point and it has three handpumps with the regulars being Doom Bar and Andwell Resolution plus a local guest - Red Cat Prowler on my last visit. Food is a feature and also on my last visit the twice monthly folk session (2nd /4th Sunday of the month) was in full swing. All in all a fantastic waiting room for your next train! [Opening hours: 12-3; 5.30-11 Mon-Fri; 12-11 Sat; 12-10 Sun] Tel: 01962 774288

John McGarvey

It's Better Down The Pub.com

Share your local pub stories,
submit your photos of funny, touching & emotional scenes,
upload your clips and vote for your favourite!

visit: itsbetterdownthepub.com

Share with us for your chance to **WIN** Great Prizes!

including... photo cameras & tickets to major sporting events!

#itsbetterdownthepub @IDOTP

NEW FROM CAMRA BOOKS

So you want to be a BEER EXPERT?

SO YOU WANT TO BE A BEER EXPERT?

What makes a great beer? This book answers that question by presenting a hands-on course in beer appreciation, leading to an understanding of world beer styles, beer flavours, how beer is made, the ingredients, buying and storing beer, and more. Uniquely, *So You Want...* doesn't just relate the facts but uses interactive tastings that show readers, through their own taste-buds, what beer is all about.

101 BEER DAYS OUT (NEW EDITION)

From brewery tours to rail-ale trails, beer festivals to hop farms, brewing courses to historic pubs, Britain has a huge variety of beer experiences to explore and enjoy. *101 Beer Days Out* brings together the very best events, activities and places to visit around the country, all with real ale at their heart.

Both books:
RRP £12.99
Members' price £10.99
Available from www.camra.org.uk/shop

beerlines North Hampshire Branch of CAMRA

BOOK 4 EDITIONS FOR A 10% DISCOUNT

ADVERTISE WITH US & REACH 6500+ REAL ALE DRINKERS

Advertising costs as little as £55 for 3 months! *Beer lines* distributes to branch area pubs in the North Hampshire area, it's never been easier to reach over 6500 people with your advertising.

• FULL PAGE: £195 +vat • HALF PAGE: £125 +vat • QUARTER PAGE: £65 +vat

FREE AD DESIGN

To advertise call Capital Media on **01256 832 832**

@capital

www.camrahampshirerh.org.uk

A Campaign of Two Halves

Fair deal
on beer
tax

Save
Britain's
Pubs!



Join CAMRA Today

Complete the Direct Debit form and you will receive 15 months membership for the price of 12 and a fantastic discount on your membership subscription.

Alternatively you can send a cheque payable to CAMRA Ltd with your completed form, visit www.camra.org.uk/joinus or call 01727 867201. All forms should be addressed to the: Membership Department, CAMRA, 230 Hatfield Road, St Albans, AL1 4LW.

Your Details

Title _____ Surname _____

Forename(s) _____

Date of Birth (dd/mm/yyyy) _____

Address _____

Postcode _____

Email address _____

Tel No(s) _____

Direct Debit Non DD

Single Membership £24 ☐ £26 ☐
(UK & EU)

Joint Membership £29.50 ☐ £31.50 ☐
(Partner at the same address)

For Young Member and other concessionary rates please visit www.camra.org.uk or call 01727 867201.

I wish to join the Campaign for Real Ale, and agree to abide by the Memorandum and Articles of Association

I enclose a cheque for _____

Signed _____ Date _____

Applications will be processed within 21 days

Partner's Details (if Joint Membership)

Title _____ Surname _____

Forename(s) _____

Date of Birth (dd/mm/yyyy) _____

Email address (if different from main member) _____

01/15

**Campaigning for Pub Goers
& Beer Drinkers**

**Enjoying Real Ale
& Pubs**

Join CAMRA today - www.camra.org.uk/joinus



Instruction to your Bank or Building Society to pay by Direct Debit

Please fill in the whole form using a ball point pen and send to:
Campaign for Real Ale Ltd, 230 Hatfield Road, St Albans, Herts AL1 4LW

Name and full postal address of your Bank or Building Society Service User Number

To the Manager Bank or Building Society

Address

Postcode

Name(s) of Account Holder

Bank or Building Society Account Number

Branch Sort Code

Reference

9 2 6 1 2 9

FOR CAMPAIGN FOR REAL ALE LTD OFFICIAL USE ONLY
This is not part of the instruction to your Bank or Building Society

Membership Number

Name

Postcode

Instructions to your Bank or Building Society

Please pay Campaign for Real Ale Limited Direct Debits from the account detailed on this instruction subject to the safeguards assured by the Direct Debit Guarantee. I understand that this instruction may remain with Campaign for Real Ale Limited and, if so will be passed electronically to my Bank/Building Society.

Signature(s)

Date



**This Guarantee should be detached
and retained by the payer.**

The Direct Debit Guarantee

- The Guarantee is offered by all banks and building societies that accept instructions to pay by Direct Debit.
- If there are any changes to the amount, date or frequency of your Direct Debit The Campaign for Real Ale Ltd will notify you 10 working days in advance of your account being debited or as otherwise agreed. If you request The Campaign for Real Ale Ltd to collect a payment, confirmation of the amount and date will be given to you at the time of the request.
- If an error is made in the payment of your Direct Debit by The Campaign for Real Ale Ltd or your bank or building society you are entitled to a full and immediate refund of the amount paid from your bank or building society.
- If you receive a refund you are not entitled to, you must pay it back when The Campaign for Real Ale Ltd asks you to.
- You can cancel a Direct Debit at any time by simply contacting your bank or building society. Written confirmation may be required. Please also notify us.



THE Calleva Arms

SILCHESTER | HAMPSHIRE | RG7 2PH

Our pretty, mature garden makes The Calleva Arms one of the best pubs in Hampshire in summer - perfect for relaxing in the sun with a pint of real ale.

We have seats overlooking the local cricket pitch, too, and a petanque pitch for those who'd rather play ball than just watch...

Dine in style

Fantastic home-cooked dishes make The Calleva Arms a real find for foodies. Savour fresh, locally sourced produce, traditional pub classics and daily specials.

Perfect pints

With four cask-conditioned ales on the pumps, including Fuller's famous London Pride, and Gales HSB and Seafarers, this is the place to be for cask connoisseurs.



Please visit our website for full details

www.callevaarms.co.uk

01189 700305

thecalleva@gmail.com



YOUR LOCAL BREWERY

Andwell's is an award-winning brewery, offering award-winning beer, situated conveniently between Hook and Basingstoke.

Our beautiful cask ales, bottled beers and lagers are widely available in the local area and in the Brewery shop.

Or come and see for yourself what goes into making our 'Beautifully Crafted Hampshire Ales' by joining us for a Brewery tour.

BEERS • TOURS • SHOP



the brewhouse

CAFÉ | VENUE | SHOP

The Brewhouse is located from September 2016 next to the Brewery in Andwell and will offer much sought after space for business meetings and private functions. The Brewhouse will also be home to a Café and a new Brewery Shop.

COMING LATE SUMMER 2016