

BEER LINES

NEW
DESIGN

ISSUE 18
AUGUST - OCTOBER 2017

FREE TO ALL PUB USERS

THE MAGAZINE OF THE NORTH HAMPSHIRE BRANCH OF THE CAMPAIGN FOR REAL ALE

IN THIS ISSUE

PUB FOCUS

BARTON'S MILL, OLD BASING

LOCALE

PUB WALK

CHARTER ALLEY & MONK
SHERBORNE

WE NEED YOU!

BEER SCORING

AND MUCH MORE INSIDE!



BARTON'S MILL, OLD BASING
One of the most attractive venues in
North Hampshire.
Read more about it on page 10

FREE PINT OF BEER
& STEIN GLASS
WITH EVERY TICKET



Craft Beer, Bavarian Beer and Real Ale

Live Music & Street Food, including Bavarian bratwurst

Saturday 23rd September 2017

Tickets  **£10**

per session and include a free pint & a stein

(both sessions can be purchased if required)

For more info and to book call

01635 202968

or book online at WBBREW.COM

   **WESTBERKS BREW**

Tithe Barn, Yattendon, Berkshire, RG18 0UE



Day
Session
12-5

Evening
Session
6-11



EDITOR'S ROUND

WELCOME TO YOUR NEW-LOOK *BEER LINES*

We have striven to present your magazine in a totally fresh way whilst retaining many of the regular features. You may have noticed that the quarterly publishing dates have moved on by one month; hopefully this will attract more Christmas advertisers – we are totally funded by advertising.

Cider lovers will notice that there is no 'Cider Binn'; our cider correspondent, Tony Binns, has moved away from the area and although he will no longer be contributing regular articles it is hoped he may be willing to pen the occasional guest piece. Beer Lines wishes to pass on our gratitude to Tony for all the work he has put in over the last few years and wishes him well.

On the beer/pub scene, if you fancy yourself as a journalist, Beer Lines is always looking for fresh input. Think your local deserves an in-depth article? Contact the editor.

Less demanding, but equally important, are snippets of news from members across the North Hampshire branch. CAMRA is nothing without its members; equally Beer Lines would struggle to exist without valuable input from members across the whole of the branch.

Finally, it is with heavy heart that I announce I am stepping down as editor at the end of this year. After more than three years in this post I feel it is time to move aside and open up the position to someone new, someone with fresh ideas. With over 700 potential candidates in the branch I feel confident that one of you will rise to the post, thus ensuring the survival of this award-winning magazine.

Cheers!

Jim Turner
Editor

Branch Contacts

Editor - Jim Turner

e: beerlines@camrahantsnorth.org.uk

Branch Chairman - Position vacant

e: chairman@camrahantsnorth.org.uk

Branch Secretary - Position vacant

All branch officers can be contacted securely through our website (see below):

Pubs and Clubs Officer - John Buckley

Membership Secretary - Brenda Cross

Branch Contact - Position vacant

LocAle Officer - Position vacant

Social Secretary - Position vacant

Branch Treasurer - Doug Cross

Webmaster - Position vacant

Web: www.camrahantsnorth.org.uk

Facebook: 'North Hampshire CAMRA'

The Editor reserves the right to exclude, amend or shorten contributions submitted for publication. Unless otherwise stated, all editorial copyright ©North Hampshire CAMRA 2017.

Disclaimer

Views expressed in this publication are those of their individual authors and are not necessarily endorsed by the editor, branch

committee or the Campaign for Real Ale Ltd. North Hampshire CAMRA accepts no liability in relation to the accuracy of advertisements; readers must rely on their own enquiries. It should also be noted that acceptance of an advertisement in this publication should not be deemed an endorsement of quality or accuracy by North Hampshire CAMRA.

Campaign for Real Ale Ltd

230 Hatfield Road, St Albans, Hertfordshire AL1 4LW
t: 01727 867201; e: camra@camra.org.uk
web: www.camra.org.uk

Trading Standards (Hampshire)

Hampshire Trading Standards
Montgomery House, Monarch Way, Winchester, SO22 5PW
t: 01962 833620; fax: 01962 833698;
e: tsadvice@hants.gov.uk web: www.hants.gov.uk

Published by Matelot Marketing

29 Ostlers Way, Kettering, Northamptonshire NN1 6GJ
t: 01536 358670; e: n.richards@btinternet.com
web: www.matelotmarketing.co.uk

©2017 Matelot Marketing. All Rights Reserved. No part of this publication may be transmitted, reproduced, recorded, photocopied or otherwise without the express written permission of the copyright holder.



Brewers collaborate in memory of a dear friend

Local brewers Burning Sky and Harvey's have produced a 'collaborative brew' in memory of a dear friend. Ruth Anglezarke, a prominent member of Brighton and South Downs CAMRA was the branch liaison officer for both breweries. When she died earlier this year they decided to combine their skills to produce a beer in her memory.

"Anglezarke's IPA" was awarded 'Beer of the Festival' at the 21st South Downs Beer & Cider Festival in June and will be available at the Great British Beer Festival.

Only a few miles between Lewes and Fittlehampton separate the two breweries and they are close friends. Miles Jenner, Head Brewer of Harvey's, said "We are both passionate about brewing and have a great liking for each other's beers. Between us we cover a very broad range of styles."

Mark Tranter, Head Brewer of Burning Sky, suggested producing a strong IPA.

The two brewers then came up with a recipe which combined their malts, hop varieties and yeast strains.

The beer was brewed at Burning Sky with the brewing teams of both breweries present throughout

Mark said "The juicy malt base of Maris Otter barley, oats and Cara malts support the rich aromas of spiced orange and mango. We are all delighted with the result."



Photograph : (L-R) Miles Jenner, Peter Yarlett and Mark Tranter.

BRANCH AWARDS

CONGRATS TO ALL CONCERNED!

Pictured here is licensee Terry Brown of the **Plough**, Little London with his Area Winner award for North Hampshire CAMRA Branch Pub of the Year 2017. Terry provided a feast of beers for the presentation evening including two from local brewery Little London - Doreen's Dark and Hoppy Hilda. Also available were Branscombe Vale Mild, Ballard's Midhurst Mild and Butt's Jester. Transport to the pub, as guests of the 'Wind-Up' crew, was on an open-top double-decker classic bus, a 1977 Southdown VR owned by Morton's Coaches of Little London.



Branch Chairman Michael Hodson presenting the Area Winner award for North Hampshire CAMRA Club of the Year 2017 to Assistant Manager Kayleigh Bucksey of the **Basingstoke Sports & Social Club**.

Photos by Jim Turner

CAMRA Discounts

The following outlets graciously provide discounts on real ale purchases to members showing an up-to-date card:

ODIHAM & GREYWELL CRICKET CLUB, Odiham

Club members' rates

WHITE HART, Hook

20p discount on pints; 10p on halves

WHITE HART, Whitchurch

50p discount on pints; 25p on halves

BASINGSTOKE SPORTS & SOCIAL CLUB, Basingstoke

Club members' rates

Licensees: if you would like to offer discounts to CAMRA members and be listed here please contact the editor on beerlines@camrahantsnorth.org.uk

BREWERY NEWS

LOCAL BREWERIES - AND SOME NOT QUITE SO LOCAL

ANDWELL BREWING COMPANY

01256 761044

www.andwells.com



Although at the time of writing the café/meeting room at the brewery had still not officially opened, there have been a number of meetings and parties in the space and these have been well received and bookings are steady. *Summer Daze* (4.1%) is currently listed with Punch through Finest Cask and has been well received in the trade. Plans are now taking shape for a new style Open Day which will be taking place in September (keep a watch on the brewery website listed above).

ASCOT ALES



Now known as Ascot Brewing Company, some of the Camberley brewer's beer names have changed and will have new pump clips: 'Alley Cat' becomes *Starting Gate* (3.8%); 'Posh Pooch' is now *Final Furlong* (4.2%) and 'Alligator' changes to *5/4 Favourite* (4.6%).

LITTLE LONDON BREWERY

01256 533044

www.littlelondonbrewery.com



Andy Watts is pleased to announce a new ale called *Night Porter*. He describes it as a traditional 'Robust Porter' 4.7% ABV, brewed from a combination of Maris Otter, Black, Chocolate and Crystal malts tasting of chocolate and freshly ground coffee. It is well hopped with Fuggles and Challenger bittering hops complemented by Golding and Cascade (UK) aroma hops.

LONGDOG BREWERY

01256 324286

www.longdogbrewery.co.uk



Phil and Lisa have just passed the 6th 'birthday' of Longdog Brewery! Business though, has been so busy that they didn't get chance to plan any celebrations! In the meantime, their ales have found themselves in pubs and clubs throughout Hampshire, Berkshire, Surrey, into Wiltshire and then further afield through wholesalers.

A Tap Takeover at The Talking Heads, Southampton saw all the ales go down a storm. Fetes, Food Festivals and Fayres have seen their ales reach an even wider audience along with the ever popular beer festivals. As well as these outlets, all their ales are still available from the brewery shop where draught ale can be bought in various quantities and, by the time you read this, there should be plenty of bottles of *Kismet* in stock too, with the other ales to follow shortly after. Brewery tours are proving incredibly popular too!

MASH BREWERY

01962 795023

Twitter @MashBrewery

www.mashbrewery.com



The brewery is busy running their new bar at 'Trout 'n About' in Stockbridge; also Romsey Food Festival, Southsea Food Festival and Sherfield School.

Mash beers are available direct from the brewery or at Hampshire Farmers' Markets in Winchester, Southsea, Alton, Odiham and Romsey. There is continual expansion of pubs supplied across Hampshire.

As ever, check out the website or their Twitter and Facebook feeds for the most up-to-date information.

RED CAT BREWING

01962 863423

www.redcatbrewing.co.uk



Huehuetenango, Red Cat's 5.8% Coffee Cream Stout won Silver at the Winchester Beer Festival in March.

The next Open Day is Saturday 21st October 11am-5pm. Beer BBQ and music! Free entry, free parking, families welcome.

Upcoming brewery tour dates have been announced as Sat. Aug 19th 2017 – 2pm, and Sat Sept 30th 2017 – 2pm. Tours are £15 per person and run for about two hours. There is no charge for beer consumed afterwards! Booking is essential, email drinkbeer@redcatbrewing.co.uk or 'phone.

SHERFIELD VILLAGE BREWERY

07906 060429

www.sherfieldvillagebrewery.co.uk



SVB continues to concentrate on its core range of *TBA*, *Best of Both Worlds*, *Single-Hop*, and *Pioneer Stout*, but also has new beers planned throughout the summer (in between supplying festivals near and far). Early reminder: the Sherfield on Loddon Beer Festival returns in September.

SIREN CRAFT



The Finchampstead brewery has invested in a 5,000 square-foot cold-store; all their beer is stored at 4°C from the moment it's packaged.



Available for
beer festivals, country fairs, parties etc.

Blacksmith

The best of British
Folk/Rock

www.facebook.com/BlacksmithFolkRockband

Graham on 07702 550226 or 01256 850282
blacksmithguitar@talktalk.net



**FULL FLAVOURED REAL ALES
AVAILABLE STRAIGHT FROM THE
BREWERY**

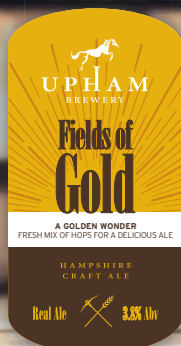
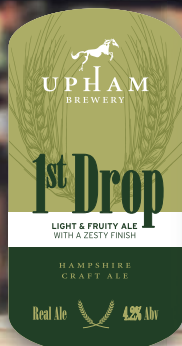
A1 MONITON TRADING ESTATE
WEST HAM LANE
BASINGSTOKE
HAMPSHIRE
RG22 6NQ
01256 324286
WWW.LONGDOGBREWERY.CO.UK





Fine Real Ale

HANDCRAFTED IN THE HEART OF HAMPSHIRE
FOR SERIOUSLY GOOD TASTE



facebook.com/uphambrewery

T 01489 861 383

WWW.UPHAMBREWERY.CO.UK



@uphambrewery





PROMOTING PUBS THAT SERVE LOCAL REAL ALES

The nationwide CAMRA-initiated LocAle accreditation scheme is intended to reward those outlets that endeavour to serve at least one locally produced Real Ale at all times. In the CAMRA North Hampshire branch, 'local' is defined as anywhere in Hampshire or within 25 miles of the outlet selling the beer. Participating outlets are provided with point-of-sale promotional material including a window sticker, and are featured in every issue of this magazine. LocAle is part of a much larger movement to encourage people to buy local wherever possible. In Hampshire and surrounding counties we are well provided with local breweries producing some first-class beers so if you see a LocAle sticker on a pub window, please make a point of supporting the pub by purchasing a locally-produced drink.

There are many benefits associated with buying local, including:

- Local brewers increase their sales
- More money is spent and retained in the local economy
- Fewer 'beer miles' results in a reduction in road congestion and pollution, reducing the impact on our environment.

If you as a licensee or customer think your pub deserves to be awarded LocAle accreditation please contact Beer Lines.

Current LocAle outlets in the CAMRA North Hampshire branch area are:

Abbotts Ann

- EAGLE INN

Basingstoke

- ANGEL INN
- MAIDENHEAD INN

Charter Alley

- WHITE HART

Dummer

- SUN INN

East Stratton

- NORTHBROOK ARMS

Freefolk

- WATERSHIP DOWN INN

Goodworth Clatford

- CLATFORD ARMS

Herriard

- FUR AND FEATHERS

Little London (nr Silchester)

- PLOUGH INN

Mattingley (nr Hook)

- LEATHER BOTTLE

Middle Wallop

- GEORGE INN

North Waltham

- FOX

North Warnborough

- MILL HOUSE
- DERBY INN

Oakley

- BARLEY MOW

Odiham

- ODIHAM & GREYWELL CRICKET CLUB

Overton

- WHITE HART
- RED LION

Over Wallop

- WHITE HART

Sherfield-on-Loddon

- FOUR HORSESHOES

St Mary Bourne

- BOURNE VALLEY INN

Stockbridge

- THREE CUPS

Totford

- WOOLPACK INN

Water End (nr Hook)

- Y KNOT INN

Whitchurch

- PRINCE REGENT

Wonston (Sutton Scotney)

- WONSTON ARMS



BARTON'S MILL, OLD BASING

Two miles east of Basingstoke sits the village of Old Basing. Famous for its Civil War connections, another attraction includes one of the most attractive pub sites in the south. Barton's Mill was a working mill up until 1965 and the Domesday Book mentions a mill on the site in the 11th century. The River Loddon still runs through the original part of the building and the mill workings can still be viewed.



The building was a private residence until December 1979 when it opened its doors as a restaurant. In the late 1980s Wadworth & Co of Devizes purchased the site which became known as the Millstone pub and Barton's

Mill restaurant. In 2013 both pub and adjoining restaurant merged and both are now known simply as Barton's Mill. "We like to think of it

as a Destination Venue" explained General Manager Ray Turnbull. It's not hard to see why. Boards everywhere advertise music events, plays, quiz nights ... there is even a Paranormal Evening in the autumn. Ray calls it 'weather-proofing' as it helps to ensure that whatever the English weather there will always be customers. In November there will be a Comedy Theatre production with meals served by actors portraying staff from Fawlty Towers. Planning a wedding? Barton's Mill offers a complete wedding package. Like Jazz? Jane Austen? Comedy nights? Sealed Knot gatherings? All of these and much more are due to the efforts of Venue Manager Mike Escott.





What about beers? Eight handpulled offer Wadworth beers plus one or two regularly changing guests. Summer usually

sees a Cider Festival although a handpulled cider such as Weston's may make an appearance at other times of the year. This year's CAMRA Good Beer Guide entry is due to the sterling efforts of Bar and Cellar Supervisor Jim Andrews.

Naturally food is a major feature, proudly organised by restaurant manager of 30 years, Manolito (no High Chaparral jokes please!). Meals can be taken in the pub area, outside or



in the restaurant. There is an extensive menu with dishes available to suit every taste. Special mention must be made of their Gluten-free accreditation awarded by the Coeliac Society - some 50-60 gluten-free meals are served per week.

Popular with walkers, history buffs as well as lovers of Real Ale and good food, dog-friendly Barton's Mill is truly a destination to be recommended. Oh, and be sure to watch out for the local ducks who can sometimes be seen wandering into the pub!

Bartons Lane, Old Basing, Basingstoke, RG24 8AE

01256 331153 / 01256 466332

www.bartonsmillpubanddining.co.uk

email: bartonsmill@wadworth.co.uk

Jim Turner

(All photos by Jim Turner)



The Wonston Arms




WHAT'S ON AT THE WONSTON



Tuesday is Fish & Chip Night on The Beach
Rob The Fyer in his Van from 645pm

1st Wednesday of Month - 'CAMRA' Photo Club Night

2nd/4th Wednesday Nights each month at 8pm we have Acoustic Dever Folk Music Night - join in or just enjoy!

Thursdays - 1630-1830 - Mobile Fishmonger on Beach

Fridays - Pop Up Curry Night - order by 5pm eat 1930

Last Sunday of Month - Live Jazz afternoon 1430

Open 5pm school nights & midday weekends & B/Hols

Real Cask Ales | Lush Wines | 99 Craft Gins

Closed Monday | Dog Friendly | Pub Games

Stoke Charity Lane, Wonston, SO21 3LS 01962 760288 / 07909993388 landlord@thewonston.co.uk

PUB TALK

NEWS, RUMOUR, GOSSIP, SCANDAL...

In Andover, there is now a planning application to add a further two flats on the site of the **George Inn** in the High Street. The pub was closed and the building left derelict some years ago. According to the planning application the extra flats are first floor only. It is understood that the applicant has stated a desire that any use of the ground floor premises would retain its dignity and enhance the George Yard conservation area. Should this result in a reopening of a public house "... the criteria of this policy will have been met". Beer Lines hopes that these are not just words and that the George Inn will reopen its doors as one of Andover's most historic pubs. Please support the application (reference: 17/01224/FULLN).

Whitchurch is to hold an apple-pressing day on the morning of Saturday 9th September. Richard Paget from myapplejuice.co.uk will press, pasteurise and bottle the juice, which you can then buy. So if you live in the area and have a glut of ripe, undamaged apples you would like to donate for pressing, visit <http://whitchurch.org.uk/news>

In Basingstoke the **Rising Sun** reopened in May and was shut again at the end of June. By the time you read this the pub should have reopened again, this time run by local businessman Kevin Divall and a business partner Tom Roden.

The **Bakers** in Basingstoke has been selling the excellent new Greene King *Amplified* alongside *Abbot* and *IPA*. The new beer has been produced in collaboration with Radio X. Beer Lines understands it will be available during the summer months only.

Still in Basingstoke, the Punch Taverns-owned **New Inn**, Sarum Hill was again closed, at the time of writing.

The **Pineapple**, Brimpton Common (formerly an Enterprise Inns property) is no more. There are plans to convert it to residential use.

There's a new pub in Odiham: the **Red Lion** in the High Street opened its doors in May. The house beer is Red Mist brewed especially for the owners, Red Mist Leisure Group, by local brewery Andwell. The pub has also been selling beer from Tilford Brewery which is part of the **Duke of Cambridge** pub in Farnham, Surrey, also owned by the Red Mist Leisure.

The **Pelican**, Pamber Heath, Tadley has a new licensee, Margaret Jordan. At the time of writing Andwell beers were being sold.



*The Red Lion, Odiham.
Photo: Jim Turner*



*Rear of the Red Lion, Overton.
Photo: Jim Turner*

The **Red Lion**, Overton was still under threat of closure at the time of writing. The owner has applied for permission to change

the pub to a private dwelling. For up-to-date information visit <https://planning.basingstoke.gov.uk/online-applications>

At the end of June, the licensees of the **Fox** at Newfound, Kate and Buddy, announced they were giving notice on their tenancy to concentrate on their outside catering business. Beer Lines wishes them well.

Outside the Branch Area

Beer Lines has been advised of plans for a new microbrewery in Broughton. Situated behind the Greyhound pub a four-barrel plant is being set up by Jon Deacon and partners under the name of **Test Brewing**. Jon says he hopes to be brewing by August. He can be contacted on 07831 746725.

Another new brewery, this time in Northam, Southampton, opened in May. **Tap It Brewery Company** was conceived by Robert Colmer who was inspired to start brewing after a visit to the USA.

<http://www.tapitbrew.co.uk>



Above: Members of the branch enjoyed a great Open Day in May at **Red Cat Brewing** in Winchester. Despite the disappointing weather there were copious amounts of their excellent ales, music and food.

If you have any news for this section please contact the editor on beerlines@camrahantsnorth.org.uk

BEER BREAK *by Brenda Cross*

1		2		3
4				
5				

Across
1. Beer coffins 4. Copy a copy 5. Show time
Down
1. Treasured stash 2. Make 20 3. Tired bankrupt
(Answers on page 21)

Soured from natural English ingredients

Crafted Hampshire Ales

Little London



BREWERY

Our core range of ales with a diversity of flavours are available year round:

- Red Boy bitter • Doreen's Dark ale • Pryde best bitter
- Hoppy Hilda pale ale • Ash Park Special bitter

plus various Seasonal Ales

LITTLELONDONBREWERY.COM

01256 533044 Little London Brewery Ltd 07785 225468

WE NEED YOU



A PLEA TO CAMRA'S 'GROUND TROOPS' YOU'RE A VITAL PART OF THE BRANCH

Four friends and the dog want to go to a country pub, but which one? Where? How far? Which way? Will it be open? For how long? How much? Is it dog-friendly? Should we eat? Are we hungry? Does it do food? Will it do it when we are there? What should we wear? Do other friends want to meet up? Who? How many? Can the pub cope? How do we let everyone know? Phew!

Yup, doing anything requires a lot of thought and planning for the perfect, seamless day out. But it is usually only one person who does all the thinking and planning; the rest just enjoy the day. This person – call them the Social Secretary – takes on the basic administrative stuff in order for everyone to have a good time.

I have now described one particular role in the CAMRA North Hampshire branch. Sadly, as a whole we are not going anywhere, not planning anything, because the few stalwarts who have been willing to put in time and effort are dwindling in numbers. Also, as their efforts on behalf of the whole group are not always perceived to be appreciated, it can get to a point where the group may cease to function.

So why bother to have a local CAMRA branch if you have a Head Office with paid staff, nice

offices and telephones? Good question ... made more relevant if CAMRA Head Office forgets the extra effort put in by volunteers on behalf of local members for little or no reward. They don't get paid in cash ...

For all the campaigns CAMRA HQ may instigate, nothing is achieved without feet on the ground, motivating and mobilising local members to talk to people, write to their MPs, sign petitions, organise and run social events, beer festivals – all things that add to the value of the membership. This also includes promoting local pubs/clubs that serve Real Ale and cider, and informing people what is available and when. This lets the silent majority of members benefit from the hard work of organising, if they want to join in!

OK, reality check: our branch now has no Chairman as Mike Hodson has stepped down due to his increased 'day job' workload, no Social Secretary to promote and run events, no Secretary to record everything, no Webmaster to oversee digital communications, no LocAle Officer (Pat Hayward has just stepped down due to ill health) and no Branch Contact. We would *like* to have a Branch Transport Officer, to influence, develop and inform about local public transport, which could encourage

more visits to village pubs. The above roles are still being covered, barely, by the remaining committee members: Doug and Brenda Cross, John Buckley and Jim Turner.

The good news – Volunteer Co-ordinators Jeff Salt (pictured below – centre) and Mike Hodson are still involved with Hampshire OctoberFest and we have a small team of volunteers who turn up annually to help make the beer/cider tent a success. This year, your tiny branch committee has succeeded in obtaining free entry to the event for all current CAMRA members. So here is a great way to get your friends who aren't members to join!



Happy volunteers at 2016 OctoberFest

Photo: Jim Turner

The question is: are you prepared to put in something yourself? The following is just a small sample of things you could be doing:

Beer-scoring can be done by any member and is really easy. See page 17.

Updating 'WhatPub' is easy to do to keep all the local information about pubs and clubs in good order (nothing worse than relying on it then finding the info is wrong).

<https://whatpub.com/login>

Voting for the Pub and Club of the Year takes a few seconds but means a lot to the winners. It means that discerning punters have recognised local establishments' service to Real Ale and real cider. Everyone likes to be thanked

and get recognition for a job well done! Details of these annual awards can be found on our Facebook page, North Hampshire CAMRA, or our website www.camrahantsnorth.org.uk

Beer Lines. Once a quarter, volunteer members in this large branch visit pubs in their locality to deliver our main form of communication. On an occasional basis, you can offer to write articles for Beer Lines, provide tit-bits of local news, take photos (if the cover pic is up for grabs, it's nice to get one printed!) and supply information about local events that members and others might like, (beer fests, tastings, 'meet the brewer' and so on). These activities must be planned well in advance though as raw copy must be with the publisher a month before delivery of printed copies. The magazine content covers the following three months.

beerlines@camrahantsnorth.org.uk

If any of this has inspired you to consider contributing actively, go to the main CAMRA website, www.camra.org.uk, log in, check your member's 'Dashboard' and look at the section called **Volunteering**. This has people's stories of how they became involved and the fun they have doing it and the pleasure this gives other members. There is also a list of branch roles and outlines of what each involves. Alternatively, as a member, you can just turn up at an advertised event. **What's Brewing** has details of local meetings and socials (if you get your magnifying glass out!) and for more local news our branch website (closed group) and Facebook page, which is open to non-members, will list events of which we are aware.

So please don't be a pub couch potato – give something back and we all gain.

Brenda Cross

Branch Membership Secretary

brenda.cross@ntlworld.com



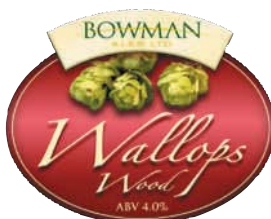
**Legendary Craft Ales -
Isle of Wight Born and Brewed !**

**Now available exclusively
from Tolchards.**

info@tolchards : www.tolchards.com
office@goddardsbrewery.com : www.goddardsbrewery.com



BOWMAN



Damn Fine Beer!

Wallops Wood, Sheardley Lane, Droxford, Hampshire SO32 3QY

01489 878110

info@bowman-ales.com

NATIONAL BEER SCORING SYSTEM (NBSS)

HELPING TO CHOOSE PUBS FOR THE GOOD BEER GUIDE

Have you ever wondered how pubs are selected for the Good Beer Guide? The NBSS scheme is part of the answer. Early each year CAMRA branches across the country will access scores from the past year for pubs and clubs within their area and together with some discussion (!) will compile a shortlist of pubs for further consideration.

The System is a 0-5 point scale for members to judge beer quality in pubs and clubs. It is a very easy-to-use system, designed to assist CAMRA branches in their selection of pubs for the GBG. It is also a tool to continuously monitor beer quality as it encourages CAMRA members from wherever they are in the world to report on the quality of beer available in any pub in the UK.

As a member, your CAMRA branch would like **you** to tell **us** about the quality of beer in pubs you have visited. If you are not a member, please consider joining what has been called the most successful consumer organisation in Western Europe.

How are beers scored?

Beers can be scored online at home or via a smartphone/tablet whilst actually in the pub! To submit scores visit whatpub.com and log into the site using your CAMRA membership number and password. After checking the terms and conditions box you can start scoring beers in whatever pub is listed on the site. Most pubs and clubs in the UK are listed but in the rare event that you find one that isn't, please report it to the Pubs and Clubs Officer for the branch. More information can be found by visiting whatpub.com/beerscoring.

The fields within the scoring page are self-explanatory so let's progress onto what the scores actually mean:

- 0** No cask ale at all at the time of your visit.
- 1 Poor.** Beer that ranges from barely drinkable to drinkable but with considerable resentment.
- 2 Average.** Competently kept and drinkable but doesn't inspire you in any way. Not worth moving to another pub but you drink the beer without really noticing.
- 3 Good.** Good beer in good form. You may cancel plans to move to the next pub. You want to stay for another pint and may want to seek out the same beer again.
- 4 Very good.** Excellent beer in excellent condition.
- 5 Perfect.** Probably the best pint you have sampled this year. Seasoned ale drinkers rarely award this score.

Half scores are also available on this system.

It is important to remember that, as a Beer Scorer, you are not making a judgement on whether or not the beer is to your taste. That is a subjective evaluation and forms no part of the NBSS. The beer must be scored on its quality and nothing else.

If necessary you can edit your scores after they have been submitted by visiting data.
beerscoring.org.uk

All local beer scores are collated by a designated branch official who will download them from the national database where they are automatically stored once uploaded. For more information CAMRA members can visit members.camra.org.uk/group/branch-nbss-coordinator/dashboard

Happy scoring!



WORTING TO CHARTER ALLEY & MONK SHERBORNE

Start at St Thomas Church, Worting (accessible by bus routes between Andover and Basingstoke) and take the small road at its right which becomes a footpath. Follow all the way to the top and Worting Wood. Take the pathway into the woods directly in front of you. Eventually this curves around to the right and out of the woods. Take the path to the left, rather than straight on, and this will take you down through a field and onto a road. Turn right here and follow the road into Wooton St Lawrence.

Walk through the village and along the road and when the road veers left take the footpath straight ahead. Follow this all the way up to the main Newbury road (take care crossing this fast road) reaching the track opposite. This incline will take you to the highest point and a wonderful view: an excellent panorama across the Hampshire and Berkshire countryside and a nice spot for a picnic too. When ready to carry on, progress downwards, almost to the Ramsdell Road. Here take the track on your left, around a gate, follow to the top and turn right. This footpath will take you down to some houses and very small road. Look out for a path on your left (across a brook) and follow this all the way along to the village hall, then to

the road. Here it's a left then quick right at the crossroads to Charter Alley. This road will take you to White Hart Lane on your left, and rather than a redeveloped premiership football ground, you will find the **White Hart Inn** on your right.



White Hart Inn

The White Hart Inn, a free house, under the careful stewardship of Howard Bradley for well over 25 years, is a rural gem that offers accommodation, a fine selection of ever-changing ales (normally three available), good hearty food, and a great sun-trap of a garden complete with exotic fish pond. It's a real locals' favourite too. If you're extremely lucky your

visit may just coincide with one of Howards own brews from 'The Secret Brewery' on the bar; if not he may well put you on the mailing list for his next creation! It is important to check the pub website (below) for opening hours and meal-times to avoid disappointment.

Upon leaving the pub, turn right and along the road to a small crossroads, take the left-hand road to Pamber and keep going until you see a track appear on your right. Take this and you'll soon arrive at Rawlings Farm. Continue straight on through – perhaps pausing to note the very pleasant pond and grounds to the main house – you'll then be directed around the horse-jumping areas and into some woods. Stay on the main path through these woods and round to the right you will eventually find yourself on a road. Turn left and you'll be just a few steps from our other pub, the **Mole**.



The Mole

This newly refurbished and recently reopened establishment is also a free house. Whilst the main bar has been given over primarily to the restaurant side of the operation, the side bar is happily a drinkers' den – three handpulls with regulars including 'LocAle' favourites Red Boy from Little London Brewery and Good Old Boy from West Berkshire Brewery. As the landlord commented to me, he's aiming at quality and consistency of ale and from my own experience he is currently delivering! Another excellent garden set-up – impressive decking

area and variety of seating makes this a great summer destination.

When leaving the pub follow the signpost direction towards Sherborne St John (to the left and ahead) and follow this main road until it swings left at the small memorial monument. Take the smaller road to the right. Almost immediately take the track on the left and follow this, ignoring the first right but taking the second one. This will initially take you up alongside a golf course before becoming what looks like the groundworks of a building site. At this point you may notice a barbed-wire fence – you need to be between it and the hedge – I had to retrace my steps! Once on this path you will inevitably end up back at the Newbury road, cross it carefully and follow the path directly opposite across the next field. Eventually you will come out onto the Wooten St Lawrence road. Upon turning right down this road, you can take one of two directions. Either take the first path on the left up to the farm then round to the right and back to Worting Wood, or take the second path on the left and you will end up back where we were earlier at Worting Wood, about a 15-minute walk from Worting Church.

**The White Hart Inn, White Hart Lane,
Charter Alley, Tadley, Hampshire
RG26 5QA.**

Tel: 01256 850048.

<http://www.whitehartcharteralley.com>

**The Mole Inn, Ramsdell Road, Monk
Sherborne, Hampshire RG26 5H.**

Tel: 01256 889911.

www.themoleinn.co.uk

Article by
John McGarvey
(Musician,
pub lover
and walker)



WHAT'S ON, WHERE AND WHEN

BEER/CIDER-RELATED EVENTS INCLUDING BRANCH DIARY

AUGUST

EGHAM BEER FESTIVAL

Thursday 3rd – Sunday 6th August

Egham United Services Club, 111 Spring Rise, Egham, Surrey TW20 9PE. Run in conjunction with the North Surrey CAMRA branch, the festival – the club's third this year – is a must for all beer and cider lovers.

www.eghambeerfestival.co.uk

FLEET LIONS BEER FESTIVAL

Saturday 5th August

The Harlington, 236 Fleet Road, Fleet, Hampshire GU51 4B.

www.fleetlions.org.uk/beerfest

VIBRANT FOREST BEER FESTIVAL

Saturday 12th August

Brockenhurst Village Hall, Highwood Road, Brockenhurst SO42 7RY.

www.vibrantforest.co.uk/beerfestival

GREAT BRITISH BEER FESTIVAL

Tuesday 8th – Saturday 12th August

Olympia Grand, Hammersmith Road, London W14 8UX. CAMRA's premier beer festival with a wide array of food, music, souvenirs and pub games. Over 900 ales, ciders and perries including an international bar.

www.gbbf.org.uk

BANKES ARMS BEER FESTIVAL

Thursday 10th – Sunday 13th August

Manor Road, Studland Bay, Dorset. 200 real ales and ciders + live music & BBQ.

www.bankesarmsbeerfestival.com

CAMRA WESSEX REGIONAL MEETING

Saturday 19th August

Barley Mow, 39 Castle Road, Southsea, Portsmouth PO5 3DE.

<https://www.wessexcamra.org.uk>

TRIPLE FFF BREWERY

Saturday 19th August

Unit 3 Magpie Works, Station Approach, Four Marks near Alton, Hampshire GU34 5HN.

Brewery Open Day from 12 noon (weather permitting!).

Plenty of beer, food + live music.

www.triplefff.com

SOUTH WESTERN ARMS FESTIVAL

Friday 25th – Monday 28th August

38-40 Adelaide Road, St Denys, Southampton.

A beer, cider and street food festival right outside St Denys rail station. No website so visit whatpub.com/pubs/HAS/00566 to find Facebook link.

SEPTEMBER

NEWBURY REAL ALE FESTIVAL

Saturday 9th September

Northcroft Fields, Newbury, Berkshire. RG14 1RS

www.newburyrealale.co.uk

SILCHESTER BEER FESTIVAL

Saturday 9th September

Silchester Village Hall, Little London Road RG7 2ND. Open from 4.00pm until 11.00pm

WEST BERKSHIRE BREWERY OKTOBERWEST

Saturday 23rd September

Frilsham Home Farm, Yattendon RG18 0XT.

Despite the name it's held in September.

There will be a selection of Bavarian beers plus West Berkshire beers.

<http://www.wbbrew.com/news/oktoberwest-2017>

WOOLSTON BEER FESTIVAL

Friday 29th – Saturday 30th September

Pear Tree Church Hall, Woolston Southampton SO19 2HA. A South Hampshire CAMRA event.

www.woolstonbeerfestival.org.uk

SHERFIELD-ON-LODDON BEER FESTIVAL

Saturday 30th September

Sherfield Village Hall RG27 0EZ. A well-supported village beer festival. Get there by no.14 bus from Basingstoke.

www.sherfieldbeerfestival.org.uk

OCTOBER

ASCOT BEER FESTIVAL

Friday 6th – Saturday 7th October

High Street, Ascot, Berkshire SL5 7JX. Organised by CAMRA South-East Berkshire and held at Ascot Racecourse.

www.ascotbeerfest.org.uk

HAMPSHIRE OCTOBERFEST 2017

Friday 13th – Sunday 15th October

Sports & Social Club ground, May's Bounty, Fairfields Road, Basingstoke RG21 3DR.

The biggest beer and cider event in Hampshire.

With over 190 beers ciders, and this year a 'craft' beer tent, the event is hosted by Wessex Heritage Trust and organised in conjunction with your local branch, North Hampshire CAMRA.

FREE admission to CAMRA members with current membership card.

www.hampshireoctoberfest.co.uk

PRINCE OF WALES BEER FESTIVAL

Friday 13th – Sunday 15th October

Prince of Wales pub, 184 Rectory Road, Farnborough GU14 8AL. A short walk from Farnborough North rail station; a longer one from Farnborough main!

<http://www.theprinceinfarnborough.co.uk>

ISLE OF WIGHT

BEER AND BUSES WEEKEND

Saturday 14th – Sunday 15th October

www.iwbeerandbuses.co.uk

Beer Break Answers

page 13:

1. casks
2. clone
3. event
4. cache
5. score
6. spent



THE SOLDIERS RETURN

8 UPPER SHERBOURNE ROAD, BASINGSTOKE RG21 5RP

TEL: 01256 352200

Family run local pub with a relaxed, friendly atmosphere

- ✓ Traditional pub food, served daily
- ✓ Free wifi, pool table, darts and sky sports showing live football
- ✓ Real ales, fine wines
- ✓ Function room available for private hire



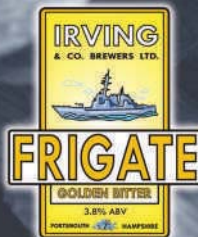
Find us on facebook

www.facebook.com/basingstokesoldiersreturn



IRVING & CO BREWERS LTD

Invincible Ales from Portsmouth



Unit G1 Railway Triangle, Walton Rd, Portsmouth, Hampshire PO6 1TQ

Tel: 02392 389988 www.irvingbrewers.co.uk

email: irvingbrewers@btconnect.com

Join up, join in, join the campaign

**CAMPAIGN
FOR
REAL ALE**

You are just moments away from a year in beer heaven!

From as little as £25* today, be part of the CAMRA community and enjoy discounted entry to around 200 beer festivals, exclusive member offers and more. Discover all the ins and outs of brewing and beer with fantastic magazines and newsletters, but even more importantly support various causes and campaigns to save pubs, cut beer tax and more.

Join CAMRA today

Enter your details and complete the Direct Debit form below to get 15 months for the price of 12 for the first year and save £2 on your membership fee.

Alternatively you can send a cheque payable to CAMRA Ltd with your completed form, visit www.camra.org.uk/joinup or call 01727 798440. All forms should be addressed to Membership Department, CAMRA, 230 Hatfield Road, St Albans, AL1 4LW.

Your details:

Title Surname

Forename(s)

Date of Birth (dd/mm/yyyy)

Address

Postcode

Email address

Tel No(s)

Direct Debit Non DD
Single Membership £25 ☐ £27 ☐
(UK & EU)

Joint Membership £30.50 ☐ £32.50 ☐

(Partner at the same address)

*For information on Young Member and other concessionary rates please visit www.camra.org.uk/membership-rates or call 01727 798440.

I/we wish to join the Campaign for Real Ale, and agree to abide by the Memorandum and Articles of Association these are available at camra.org.uk/memorandum ☐

Partner's Details (if Joint Membership)

Title Surname

Forename(s)

Date of Birth (dd/mm/yyyy)

Joint member's Email

Joint member's Tel No

Signed

Date

Applications will be processed within 21 days of receipt of this form. 04/17



CAMPAIGN
FOR
REAL ALE

Instruction to your Bank or Building Society to pay by Direct Debit

Please fill in the whole form using a ball point pen and send to:
Campaign for Real Ale Ltd, 230 Hatfield Road St. Albans, Herts AL1 4LW

Name and full postal address of your Bank or Building Society

To the Manager Bank or Building Society

Address

Postcode

Names(s) of Account Holder

Bank or Building Society Account Number

Branch Sort Code

Reference

Service User Number

9 2 6 1 2 9

FOR CAMRA OFFICIAL USE ONLY

This is not part of the instruction to your Bank or Building Society

Membership Number

Name

Postcode

Instructions to your Bank or Building Society

Please pay Campaign For Real Ale Limited Direct Debits from the account detailed on this instruction subject to the safeguards assured by the Direct Debit Guarantee. I understand that this instruction may remain with Campaign For Real Ale Limited and, if so will be passed electronically to my Bank/Building Society.

Signature(s)

Date



This Guarantee should be detached and retained by the payer.

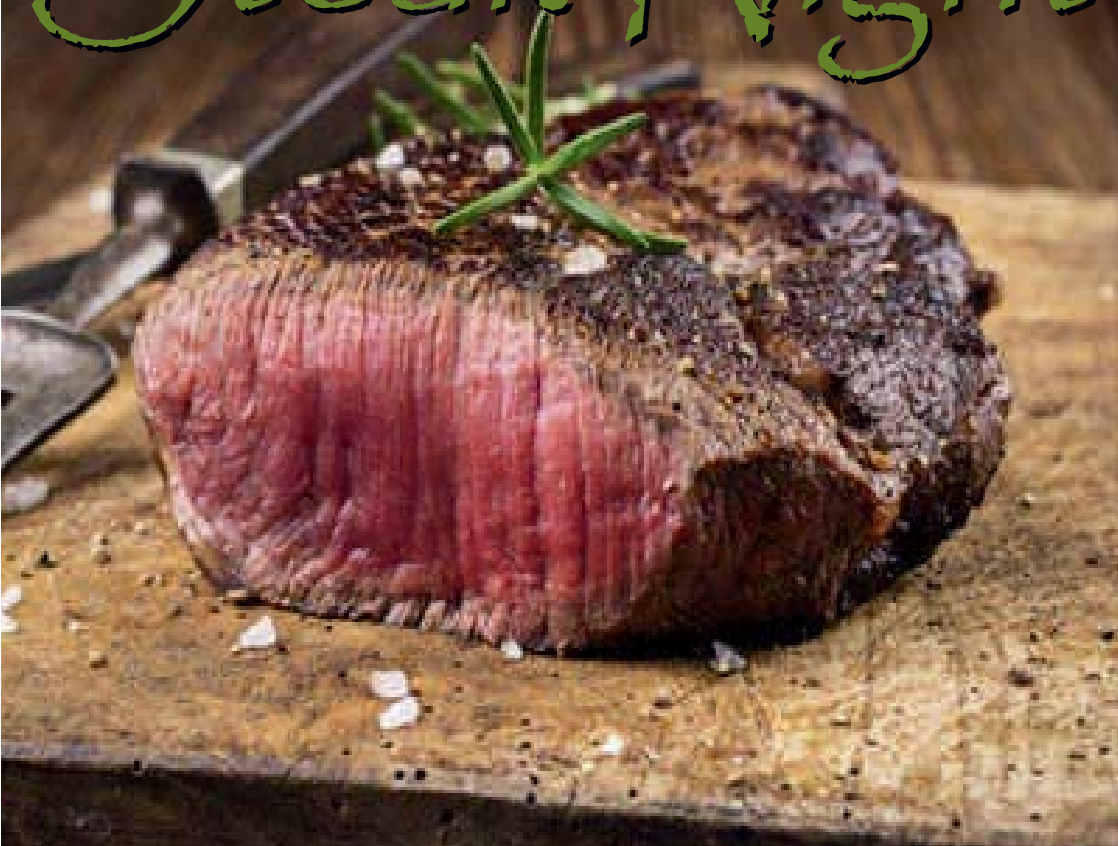
The Direct Debit Guarantee

- This Guarantee is offered by all banks and building societies that accept instructions to pay by Direct Debit.
- If there are any changes to the amount, date or frequency of your Direct Debit The Campaign for Real Ale Ltd will notify you 10 working days in advance of your account being debited or as otherwise agreed, if you request. The Campaign for Real Ale Ltd to collect a payment, confirmation of the amount and date will be given to you at the time of the request.
- If an error is made in the payment of your Direct Debit by The Campaign for Real Ale Ltd or your bank or building society, you are entitled to a full and immediate refund of the amount paid from your bank or building society.
- If you receive a refund you are not entitled to, you must pay it back when The Campaign Real Ale Ltd asks you to.
- You can cancel a Direct Debit at any time by simply contacting your bank or building society. Written confirmation may be required. Please also notify us.

Banks and Building Societies may not accept Direct Debit Instructions for some types of account.

New Direct Debit members will receive a 12 month supply of vouchers in their first 15 months of membership.

The Northbrook Arms Steak Night



JOIN US AT **THE NORTHBROOK ARMS**, EAST STRATTON
FOR STEAK NIGHT, EVERY **WEDNESDAY** EVENING
£10 FOR AN 8oz SIRLOIN WITH CHIPS AND SALAD

BOOK TO AVOID DISAPPOINTMENT

01962 774150

@thenorthbrook

thenorthbrook@aol.co.uk


**ANDWELL
BREWING CO**



Beautifully Crafted Hampshire Beers

Telephone: 01256 761044

Email: beer@andwells.com

www.andwells.com

Andwell Lane | Hook | Hampshire | RG27 9PA